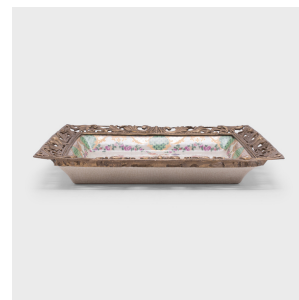

PAGODA RED



JAPONISME SERVING TRAY WITH BRONZE ORMOLU TRIM

\$1,280

c. 1930 • France • Porcelain, Bronze, Glaze • Collection #CFC137

W: 15.0" D: 2.13" H: 12.0"

This early 20th century serving tray is lavishly decorated in the Japonisme style with a painted porcelain base and an elaborate ormolu trim. Composed of cast bronze with a gilt finish, the ormolu trim adds an element of spectacle to the rectangular tray, at once lacy and delicate, yet strong and durable. Cast with an openwork design of swirling acanthus leaves, the trim's lustrous sheen and subtle patina make for a bold and glamorous embellishment. The ceramic lower is finished with a crazed clear glaze and painted with a transfer design of a vase overflowing with lively chrysanthemums, lotus flowers, and peonies. Continued...



1740 W. Webster Ave., Chicago, IL 60614 • 773-235-1188 • info@pagodared.com

PAGODARED.COM

PAGODA RED

JAPONISME SERVING TRAY WITH BRONZE ORMOLU TRIM

The sides are decorated with a border of flower garlands and additional foliate scrollwork.

From the collection of Frances and Gary Comer.



1740 W. Webster Ave., Chicago, IL 60614 • 773-235-1188 • info@pagodared.com

PAGODARED.COM