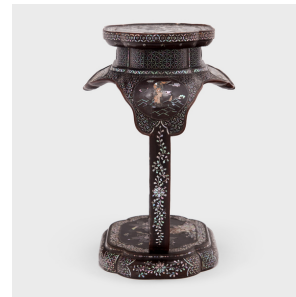
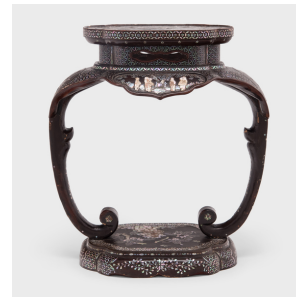

PAGODA RED



KOREAN MOTHER-OF-PEARL STOOL

\$2,880

20th Century • South Korea • Paper, Lacquer, Mother of Pearl • Collection #CFC149

W: 19.25" D: 9.5" H: 14.5"

This ornate Korean stool was crafted in the early 20th century of lacquered papier-mâché with beautiful mother-of-pearl inlay, a decorative technique known as "najeonchilgi." During the Joseon era (1392-1910), the symmetrical, arabesque designs of najeonchilgi were replaced with more diverse patterns and figurative motifs such as fruits, plants, and the ten symbols of longevity.

This lavish footstool features a quadrilobe seat and an unusual base of two narrow legs that curve outwards and end in scrolled feet. The surface is highly decorated with black lacquer patterned by intricate shell inlay. At the apron are cartouche illustrations of mythical figures and robed scholars gathered in a garden. Continued...



1740 W. Webster Ave., Chicago, IL 60614 • 773-235-1188 • info@pagodared.com

PAGODARED.COM

PAGODA RED

KOREAN MOTHER-OF-PEARL STOOL

On the seat is an intricate scene of three men playing weiqi in a courtyard garden, resting on garden stools beneath a flowering tree. These scenes are bordered by all-over patterns of petals and flowers, geometric meanders, and delicate trailing vines. Throughout the stool you can see many details of butterflies, flowers, and geometric patterns. Each shell fragment is unique in color and texture with a glimmering, iridescent finish. A stunning accessory for the home, this stool captivates with its unusual form and dazzling sparkle.

From the collection of Frances and Gary Comer.



1740 W. Webster Ave., Chicago, IL 60614 • 773-235-1188 • info@pagodared.com

PAGODARED.COM