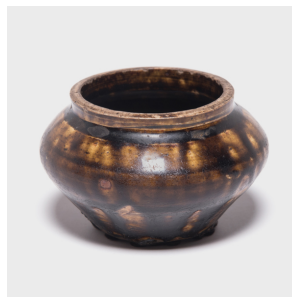


---

# PAGODA RED

---



## PETITE DRIP GLAZE VESSEL

**\$188**

c. 1850 • Northern China, China • Ceramic • Collection #CMT159

H: 2.5" Dia: 4.0"

With roots tracing back to the Han dynasty, this 19th-century vessel emulates the full-bodied shapes and unusual glazing found in ancient ceramics. Marked with barren spots, a rich, brown glaze clings to the pot's broad shoulders, pooling irregularly and creating a pattern of light and dark across the vessel. This seemingly haphazard glazing technique seen in older ceramics was originally thought to be an unintended consequence of uncontrolled drafts during firing. Continued...



1740 W. Webster Ave., Chicago, IL 60614 • 773-235-1188 • [info@pagodared.com](mailto:info@pagodared.com)

PAGODARED.COM

---

# PAGODA RED

---

## PETITE DRIP GLAZE VESSEL

However, current thinking suggests that early potters deliberately sifted ash over the pots before firing to achieve this form-enhancing application of glaze.



1740 W. Webster Ave., Chicago, IL 60614 • 773-235-1188 • [info@pagodared.com](mailto:info@pagodared.com)

PAGODARED.COM