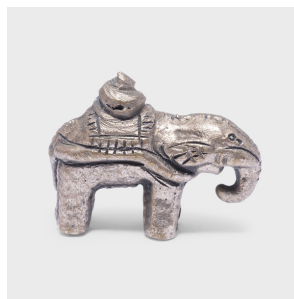

PAGODA RED



PETITE ELEPHANT FIGURINE

\$88

20th Century • China • Metal • Collection #CESB038E

W: 1.25" D: 0.5" H: 1.0"

This small metal figurine resembles the decorative scale weights used throughout the Qing dynasty to parcel out spices, opium, or other lightweight goods on tabletop balances. The petite figure is cast in the form of a saddled elephant, a symbol of strength and bearer of good fortune. Likely intended as a decorative keepsake, the tiny elephant makes for a charming gift or token of strength.



1740 W. Webster Ave., Chicago, IL 60614 • 773-235-1188 • info@pagodared.com

PAGODARED.COM