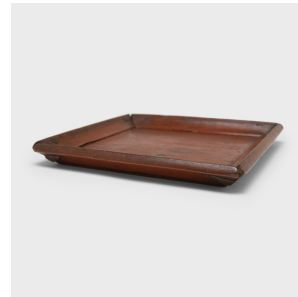

PAGODA RED



PETITE TEA TRAY

\$288

c. 1900 • Shanxi, China • Pine, Lacquer • Collection #TLB111S

W: 10.5" D: 10.5" H: 1.5"

Simple lines, a modest form, and a layer of hand-brushed lacquer give this petite Qing-dynasty tray a provincial charm that recalls the warmth of home. The red lacquer finish has weathered with time slightly revealing the light brown coloring of its pine wood construction. A tray like this would have been used to serve tea or food to friends and family gathered on traditional kang daybeds. Today, we love using small trays like this as serving platters or catch-all dishes for jewelry, glasses, and other accessories.



1740 W. Webster Ave., Chicago, IL 60614 • 773-235-1188 • info@pagodared.com

PAGODARED.COM