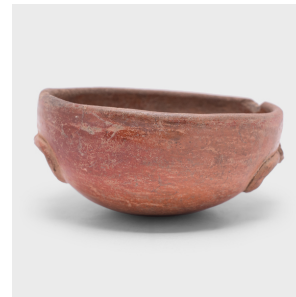
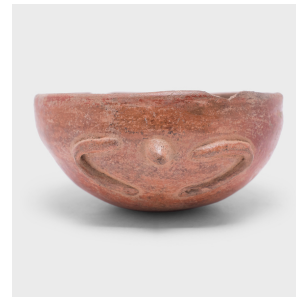
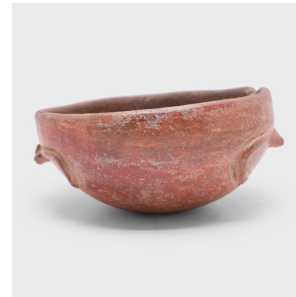

PAGODA RED



MAYA REDWARE TURTLE BOWL

\$580

c. 600-900 AD • Central America • Ceramic, Slip • Collection #CBH139

W: 5.0" D: 4.75" H: 2.5"

Exhibiting a rich patina, this petite redware bowl is attributed to Maya culture and shows many telltale signs of Pre-Columbian pottery. Speckled with imperfections, the vessel's warm red-orange coloration was achieved by applying a mineral-rich slip for a monochrome finish.

The hand-formed vessel is sculpted with a domed shape and is decorated with protruding appliqué decoration of a creature's head and limbs. The animal features are simple yet charming, and their placement on either side of the bowl is suggestive of a turtle peeking out of its shell. Although the precise date of the piece is unknown, this petite vessel remains an exquisite example of Pre-Columbian artistry. Continued...



1740 W. Webster Ave., Chicago, IL 60614 • 773-235-1188 • info@pagodared.com

PAGODARED.COM

PAGODA RED

MAYA REDWARE TURTLE BOWL

Minor chips to rim.



1740 W. Webster Ave., Chicago, IL 60614 • 773-235-1188 • info@pagodared.com

PAGODARED.COM