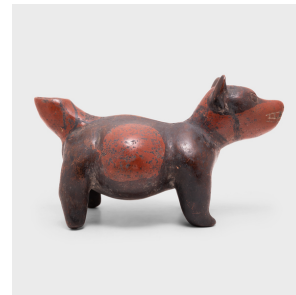
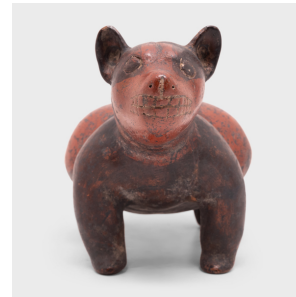

PAGODA RED



COLIMA DOG EFFIGY VESSEL

\$3,880

c. 300 • Mexico • Ceramic • Collection #CBH146

W: 12.75" D: 6.25" H: 7.25"

This charming ceramic dog is attributed to the Colima region of Western Mexico and dates to ca. 300 AD. Standing at attention with teeth bared, the dog is sculpted with an animated posture and fantastic curvilinear form. He stands on four short legs and has a rotund belly, pointed ears, and a polished coat colored by red and black slip. With a hollow body and a spout for a tail, the figure clearly doubles as a vessel, perhaps for water or maize beer. However, it was likely intended primarily for ritual or funerary purposes and buried in a tomb as a companion and protector in the afterlife. Continued...



1740 W. Webster Ave., Chicago, IL 60614 • 773-235-1188 • info@pagodared.com

PAGODARED.COM

PAGODA RED

COLIMA DOG EFFIGY VESSEL

Colima archaeological sites are famous for these red terracotta dog effigies, thought to guide the soul on its journey to the underworld.

