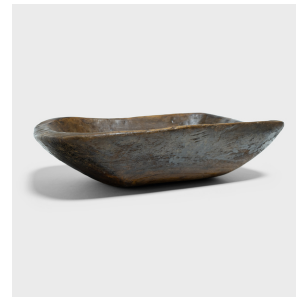
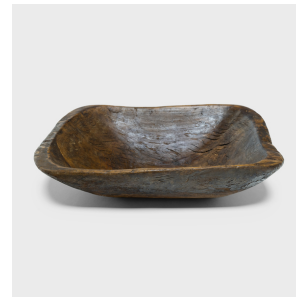
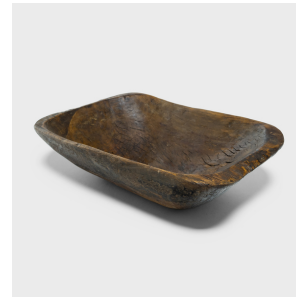

PAGODA RED



PROVINCIAL FARM TRAY

\$488

c. 1900 • Xinjiang, China • Wood • Collection #TLB153B

W: 22.0" D: 14.5" H: 5.5"

This wooden farm tray from northern China charms with its rustic finish and asymmetrical form. Hand-carved from a single block of wood, the large tray is truly one-of-a-kind, shaped with curved edges, tapered sides, and a deep interior basin. Years of use have rounded the corners and imparted a well-worn, wabi sabi texture. Originally used for food prep in a provincial farm or kitchen, the tray brings a touch of organic modern to contemporary interiors as a catch-all or serving platter.



1740 W. Webster Ave., Chicago, IL 60614 • 773-235-1188 • info@pagodared.com

PAGODARED.COM