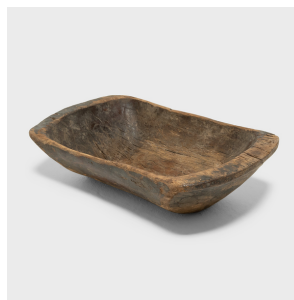
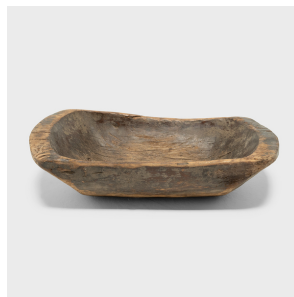
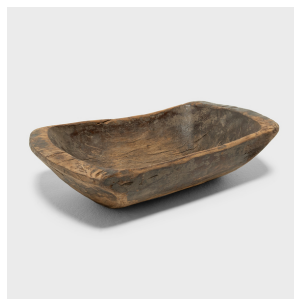

PAGODA RED



PROVINCIAL FARM TRAY

\$388

c. 1900 • Xinjiang, China • Wood • Collection #TLB153K

W: 20.5" D: 11.75" H: 5.25"

This hand-carved wooden tray from northern China charms with rustic texture and simple form. Years of use have rounded the edges and imparted a well-worn, wabi sabi texture. Originally used in a provincial farm or kitchen, the tray brings a touch of organic modern to contemporary interiors as a catch-all or serving platter.



1740 W. Webster Ave., Chicago, IL 60614 • 773-235-1188 • info@pagodared.com

PAGODARED.COM