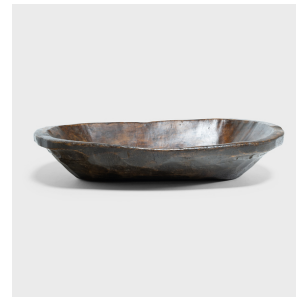
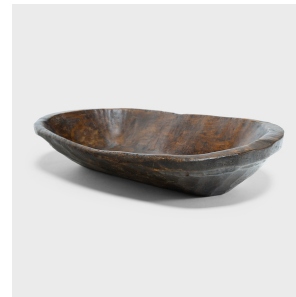

PAGODA RED



LARGE PROVINCIAL FARM TRAY

\$680

c. 1900 • Xinjiang, China • Wood • Collection #TLB153M

W: 26.0" D: 15.0" H: 5.0"

This wooden tray from northern China charms with rustic texture and asymmetric form. Hand-carved from a single block of wood, the tray has an oval shape with rounded corners and tapered sides that flatten at the rim. Years of use have imparted a smooth patina and a well-worn, wabi sabi texture. Originally used in a provincial farm or kitchen, the tray brings a touch of organic modern to contemporary interiors as a catch-all or serving platter.



1740 W. Webster Ave., Chicago, IL 60614 • 773-235-1188 • info@pagodared.com

PAGODARED.COM