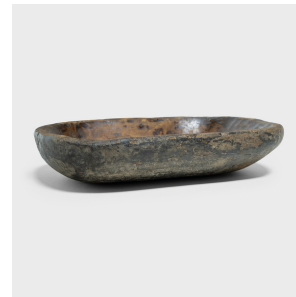
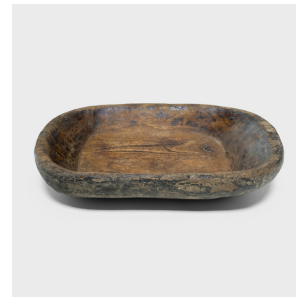


---

# PAGODA RED

---



## PROVINCIAL FARM TRAY

**\$388**

c. 1900 • Xinjiang, China • Wood • Collection #TLB153P

W: 19.0" D: 12.5" H: 4.0"

This wooden tray from northern China charms with rustic texture and asymmetric form. Hand-carved from a single block of wood, the tray has an oval shape with rounded corners and short, tapered sides. Years of use have weathered the original lacquer finish and imparted a textured, wabi sabi finish. Originally used in a provincial farm or kitchen, the tray brings a touch of organic modern to contemporary interiors as a catch-all or serving platter.



1740 W. Webster Ave., Chicago, IL 60614 • 773-235-1188 • [info@pagodared.com](mailto:info@pagodared.com)

PAGODARED.COM