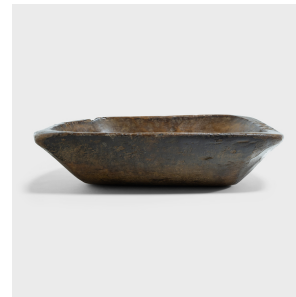
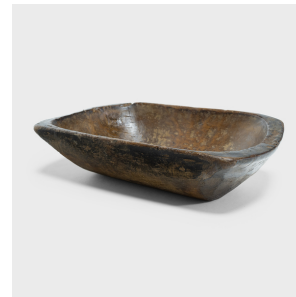


---

# PAGODA RED

---



## PROVINCIAL FARM TRAY

**\$680**

c. 1900 • Xinjiang, China • Wood, Metal • Collection #TLB153Y

W: 24.0" D: 14.5" H: 6.0"

This wooden farm tray from northern China charms with its rustic finish and asymmetrical form. Hand-carved from a single block of wood, the large tray is truly one-of-a-kind, shaped with a deep basin and tapered sides that flatten at the rim. The surface of the tray is faceted with subtle chisel marks that trace the maker's hand, smoothed and darkened by a richly aged patina. An antique metal repair reinforces the base and conceals areas of wear in the wood. Continued...



1740 W. Webster Ave., Chicago, IL 60614 • 773-235-1188 • [info@pagodared.com](mailto:info@pagodared.com)

PAGODARED.COM

---

# PAGODA RED

---

## PROVINCIAL FARM TRAY

Originally used for food prep in a provincial farm or kitchen, the tray brings a touch of organic modern to contemporary interiors as a catch-all or serving platter.

