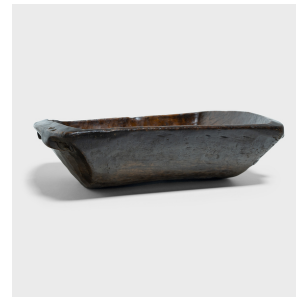
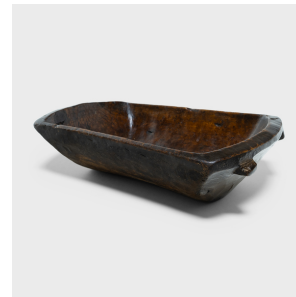
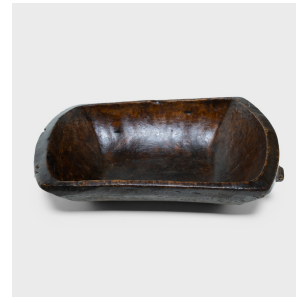

PAGODA RED



LARGE PROVINCIAL FARM TRAY

\$880

c. 1900 • Xinjiang, China • Wood • Collection #TLB153Z

W: 27.0" D: 17.5" H: 7.0"

This early-20th century wooden tray from northern China charms with rustic texture and asymmetric form. Hand-carved from a single block of wood, the tray has a rectangular shape with rounded corners and tapered sides that flatten out at the rim. Years of use have imparted a smooth patina and a well-worn, wabi sabi texture. Originally used in a provincial farm or kitchen, this dark brown tray brings a touch of organic modern to contemporary interiors as a catch-all or serving platter.



1740 W. Webster Ave., Chicago, IL 60614 • 773-235-1188 • info@pagodared.com

PAGODARED.COM