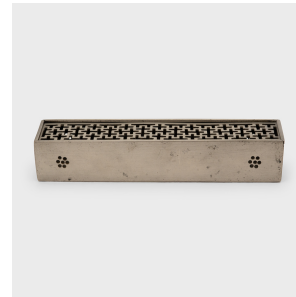

PAGODA RED



LATTICE TOP INCENSE BOX

\$480

c. 1850 • Northern China, China • Alloy • Collection #CFC609

W: 7.25" D: 1.5" H: 1.25"

This slender metal container is a 19th-century white brass incense burner, used for storing and burning incense sticks. The small box has a rectangular form and a removable sliding top lid, perforated with a reticulated geometric pattern reminiscent of window lattice. Dotted floral cutouts decorate the sides and provide additional airflow. Ideal today as a home accent or desk accessory, whether used traditionally to store incense or repurposed as a storied container for pens, jewelry or other small objects.

From the collection of Frances and Gary Comer.



1740 W. Webster Ave., Chicago, IL 60614 • 773-235-1188 • info@pagodared.com

PAGODARED.COM