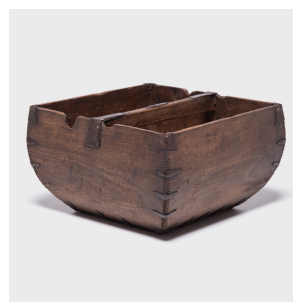

PAGODA RED



PROVINCIAL RICE MEASURE

\$388

c. 1900 • Shanxi, China • Pine, Iron • Collection #BJFF080M

W: 15.5" D: 15.5" H: 9.25"

This rustic container was made over a hundred years ago to measure and hold a dou of rice, an ancient Chinese measurement. Hand-crafted with dovetail joinery, the vessel has gracefully swelling sides and a straight handle burnished from years of use. An unusual amount of care was taken by trimming the corners of the measure in iron fittings to protect against damage. This measure has aged wonderfully, boasting a smooth, softened finish developed from the touch of hands over time.



1740 W. Webster Ave., Chicago, IL 60614 • 773-235-1188 • info@pagodared.com

PAGODARED.COM