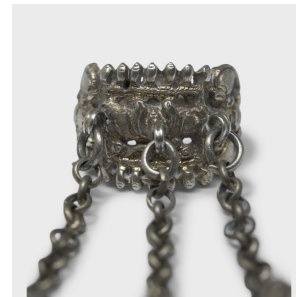
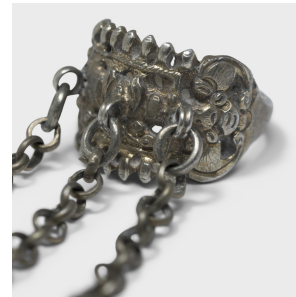


---

# PAGODA RED

---



## LOTUS CHARM RING

**\$88**

c. 1900 • China • Silver • Collection #LUBRING\_CC

W: 1.0" D: 1.0" H: 2.25"

Dated to the late 19th century, this silver charm ring was believed to protect the wearer from bad luck and malevolent spirits. The ring is patterned in relief with a lotus flower bordered by intricate conch shells. One of the most esteemed flowers in Chinese art, the lotus is one of the Eight Treasures of the Buddha and symbolizes purity and perfection. Conch shells are also Buddhist symbols, and were ritual instruments representing the Voice of the Buddha and the transmission of his teachings. Two bats flank the sides, good omens thought to bring about happiness and prosperity. Continued...



1740 W. Webster Ave., Chicago, IL 60614 • 773-235-1188 • [info@pagodared.com](mailto:info@pagodared.com)

PAGODARED.COM

---

# PAGODA RED

---

## LOTUS CHARM RING

The ring is complete with three chains hanging from the band, each bearing small offering fruit charms.

Ring size is adjustable. All jewelry sales are final. No refunds or exchanges.

