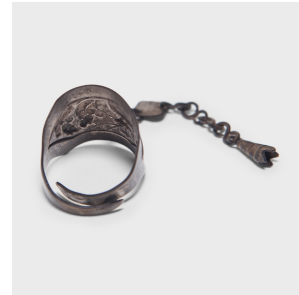


---

# PAGODA RED

---



## ENAMELED CHARM RING

**\$88**

c. 1900 • China • Silver, Enamel • Collection #LUBRING\_J

H: 1.0" Dia: 1.0"

Dated to the late 19th century, this silver charm ring was crafted by the Miao peoples of the Guizhou province and was believed to protect the wearer from bad luck and malevolent spirits. The ring is decorated with a scene of two robed scholars strolling towards a tiered pagoda. The raised design is surrounded by a background of bright blue enamel. A short chain hangs from the front of the ring, decorated with small charms like a knotted silk tassel.

Ring size is adjustable. All jewelry sales are final. No refunds or exchanges.



1740 W. Webster Ave., Chicago, IL 60614 • 773-235-1188 • [info@pagodared.com](mailto:info@pagodared.com)

PAGODARED.COM

---

# PAGODA RED

---

## ENAMELED CHARM RING

Additional Dimensions:

Chain Length: 2.25"



1740 W. Webster Ave., Chicago, IL 60614 • 773-235-1188 • [info@pagodared.com](mailto:info@pagodared.com)

PAGODARED.COM