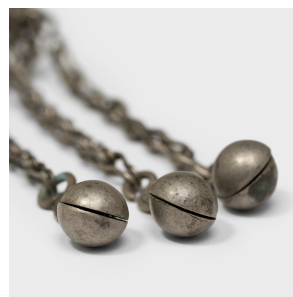
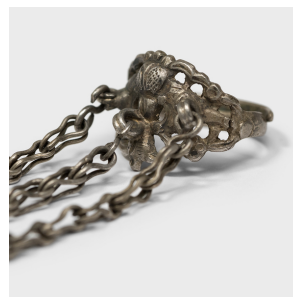

PAGODA RED



FLORAL CHARM RING

\$88

c. 1900 • China • Silver • Collection #LUBRING_R

W: 1.0" D: 0.75" H: 3.0"

Dated to the late 19th century, this silver charm ring was believed to protect the wearer from bad luck and malevolent spirits. The ring is decorated with an openwork design of intricate florals and strung with three thin chains ending in round bells.

Ring band is adjustable. All jewelry sales are final. No refunds or exchanges.



1740 W. Webster Ave., Chicago, IL 60614 • 773-235-1188 • info@pagodared.com

PAGODARED.COM