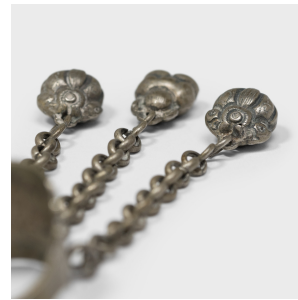

PAGODA RED



LOTUS CHARM RING

\$88

c. 1900 • China • Silver • Collection #LUBRING_S

W: 1.5" D: 1.0" H: 3.0"

Dated to the late 19th century, this silver charm ring was believed to protect the wearer from bad luck and malevolent spirits. The ring is etched with an elegant lotus blossom design, an emblem of summer and a symbol of purity and perfection. One of the most esteemed flowers in Chinese art, the lotus is an embodiment of beauty and one of the Eight Treasures of the Buddha. The ring is strung with three thin chains, each ending in a small repoussé offering fruit charm.

Ring band is adjustable. All jewelry sales are final. No refunds or exchanges.



1740 W. Webster Ave., Chicago, IL 60614 • 773-235-1188 • info@pagodared.com

PAGODARED.COM