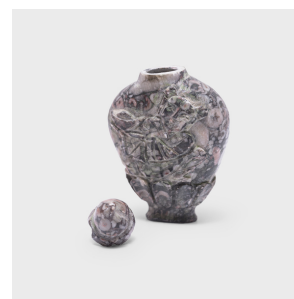
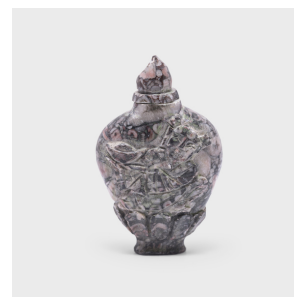


---

# PAGODA RED

---



## FOSSIL STONE SNUFF BOTTLE

**\$148**

20th Century • China • Conglomerate Stone • Collection #CESB050

W: 1.5" D: 0.75" H: 2.5"

A mixture of finely powdered tobacco, herbs, and spices, snuff was introduced to China in the 17th century by Western diplomats. Initially reserved for ranking members of Qing-dynasty society, the practice provided an opportunity to display one's refined aesthetic through collectible snuff bottles. This petite snuff bottle is carved from a conglomerate stone embedded with small fossils and pebbles. The bottle has a flat, tapered form with high shoulders and a narrow base carved with flower petals. Continued...



1740 W. Webster Ave., Chicago, IL 60614 • 773-235-1188 • [info@pagodared.com](mailto:info@pagodared.com)

PAGODARED.COM

---

# PAGODA RED

---

## FOSSIL STONE SNUFF BOTTLE

One side is carved with a long-tailed bird amid flowers, and the other with a young boy holding an ingot, a motif for wealth and success.



1740 W. Webster Ave., Chicago, IL 60614 • 773-235-1188 • [info@pagodared.com](mailto:info@pagodared.com)

PAGODARED.COM