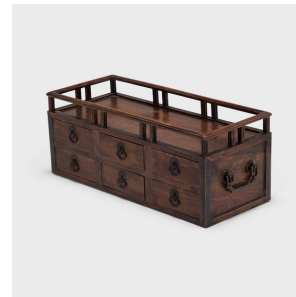
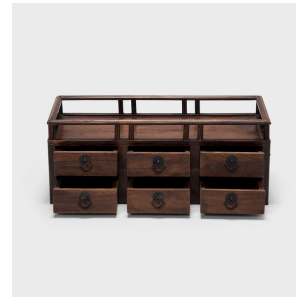


---

# PAGODA RED

---



## TABLETOP SCHOLARS' CHEST

**\$1,980**

c. 1900 • Hebei, China • Rosewood, Brass • Collection #BJGG052

W: 17.0" D: 7.25" H: 7.25"

Crafted of fine rosewood, this early 20th-century scholars' chest is an example of the multi-functional boxes used tabletop in lieu of a chest of drawers. While some were used to store cosmetics, jewelry, documents, and other accessories, the small scale and narrow drawers of this box suggest it was used to store incense. The fine box likely belonged in a scholars' studio, displaying precious objects such as censers, vases, or scholars' stones behind the subtly carved railing. Showcasing the rich color and fine grain of prized rosewood, this tabletop chest is perfect as a jewelry box or a display stand for decorative objects. Continued...



1740 W. Webster Ave., Chicago, IL 60614 • 773-235-1188 • [info@pagodared.com](mailto:info@pagodared.com)

PAGODARED.COM

---

# PAGODA RED

---

## TABLETOP SCHOLARS' CHEST

Additional Dimensions:

Drawer: 4"W x 6"D x 1.



1740 W. Webster Ave., Chicago, IL 60614 • 773-235-1188 • [info@pagodared.com](mailto:info@pagodared.com)

PAGODARED.COM