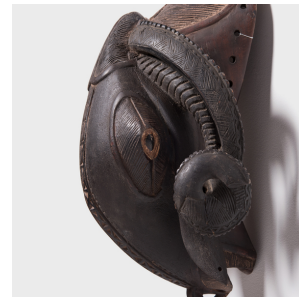

PAGODA RED



BAULE RAM MASK

\$880

c. 1950 • Ivory Coast • Wood • Collection #CAA1359

W: 11.5" D: 8.0" H: 15.5"

With its twisting horns and intricately carved surface, this wooden ram mask is a remarkably sculptural example of Baule artwork. According to the Baule mythology, the ram is a heavenly spirit of agriculture, and, accordingly, this mask is typically worn on the occasion of the new harvest season. Seen at an angle, the mask is animated with life-like detail in the eyes and horns, while from the front, the animal form is abstracted into geometric forms and curvatures. With its subdued palette and balanced form, this Baule mask would be a fantastic sculptural addition to a minimalist interior.



1740 W. Webster Ave., Chicago, IL 60614 • 773-235-1188 • info@pagodared.com

PAGODARED.COM