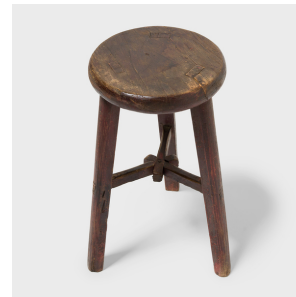
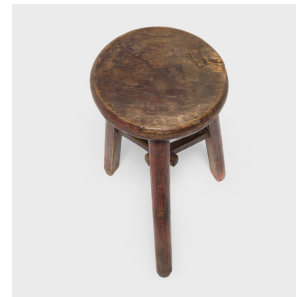

PAGODA RED



INTERLOCKING TRI-LEG STOOL

\$880

c. 1900 • Shanxi, China • Pine, Lacquer • Collection #TLB143

W: 15.0" D: 12.5" H: 22.25"

Deceptively simple, this early 20th century stool from Shanxi province shows off the ingenious joinery methods traditionally used by Chinese carpenters. The stool's three splayed legs are supported by stretcher bars that interlock at the center in a star formation. Not only does this provide stability, it adds a sense of balance and design intrigue to the otherwise simple form. The pine construction is darkened by a thin red-brown lacquer finish, now faded on the round seat from years of use. A ubiquitous part of daily life, a rustic stool such as this would have been used throughout the home for casual seating, indoors and out. Continued...



1740 W. Webster Ave., Chicago, IL 60614 • 773-235-1188 • info@pagodared.com

PAGODARED.COM

PAGODA RED

INTERLOCKING TRI-LEG STOOL

The underside is painted with a Chinese character denoting the owner's surname.

Additional Dimensions:

Seat Diameter: 10.



1740 W. Webster Ave., Chicago, IL 60614 • 773-235-1188 • info@pagodared.com

PAGODARED.COM