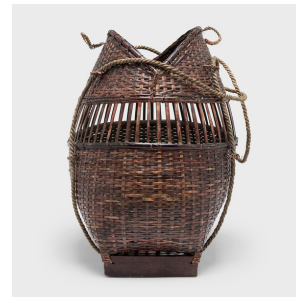


---

# PAGODA RED

---



## WOVEN BAMBOO BASKET

**\$780**

Southeast Asia • Smoked Bamboo • Collection #CDH010B

W: 15.5" D: 10.5" H: 16.0"

This smoky brown carrying basket originates from southeast Asia and is expertly crafted of thin strips of smoked bamboo. Carefully hand-woven in a plain weave with a band of exposed warp, the basket wonderfully showcases the artisan's mastery of their craft. The basket has a tapered form that swells at the base and narrows to a rounded opening that resembles a coin pouch with a latch handle. The edges are reinforced with bent reeds and the bottom is secured to a rectangular wooden base. Continued...



1740 W. Webster Ave., Chicago, IL 60614 • 773-235-1188 • [info@pagodared.com](mailto:info@pagodared.com)

PAGODARED.COM

---

# PAGODA RED

---

## WOVEN BAMBOO BASKET

Thin ropes made from twisted plant fibers run through small loops on the sides for use as a handle or shoulder straps. Framing the clean lines of the basket is a flat-oval reed detailing and twisted ropes to be used as a handle. Used for carrying goods or general storage, the basket is a work of art in itself and a beautiful example of a traditional craft.

