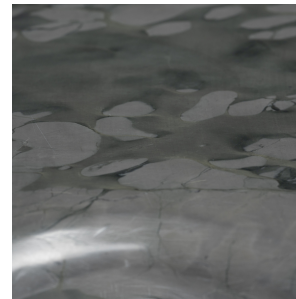
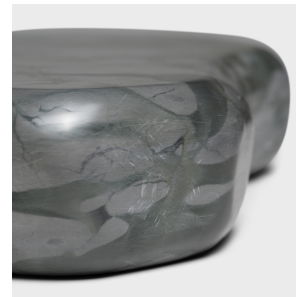


---

# PAGODA RED

---



## ZHENZHU SERVING STONE

**\$468**

Jiangsu, China • Conglomerate Stone • Collection #ZH4022D

W: 12.5" D: 10.0" H: 2.5"

This small stone slab tray is formed of zhenzhu stone, a conglomerate limestone extracted from Lake Tai in China's Jiangsu province. Speckled with painterly daubs of color, the blue-grey puddingstone has been prized by scholars for centuries as a way to focus the mind and inspire creativity. The stone tray exemplifies Organic Modern style with its irregular patterning, rounded edges, and oblong, biomorphic shape. For a memorable table setting, we love using these zhenzhu serving stones as elevated charcuterie boards for fruit, bread, and cheese.



1740 W. Webster Ave., Chicago, IL 60614 • 773-235-1188 • [info@pagodared.com](mailto:info@pagodared.com)

PAGODARED.COM